



The Hathaway Ranch Museum & Rancho Santa Gertrudes - NEWSLETTER - Historical Society

11901 E. Florence Avenue • Santa Fe Springs, California 90670

Volume 1, Number 5

SPECIAL ISSUE 1992

HISTORICAL SOCIETY ACHIEVES GOALS

RANCHO SANTA GERTRUDES HISTORICAL SOCIETY, founded in 1983, was dissolved by its Board of Directors at its regular meeting on December 1, 1991. The establishment of the society was an opportunity for people to come together who shared historical interests. At the time there was no other community organization (other than the official SFS Historical Committee) in Santa Fe Springs devoted to the preservation of history. The Board acknowledged its thanks to Nadine Hathaway for her dedication and for the use of her home and property as the society's home base.

Members can look back with pride at their organization's accomplishments. RSGHS became an important factor in the formation of Heritage Park and the Hathaway Ranch Museum. Its members took on the responsibility of docenting at both institutions, one of the earliest aims of RSGHS. With Heritage Park and the Hathaway Ranch Museum now running active programs, the Board agreed that the goals of RSGHS had been achieved. It was also felt that there was an increasing "leadership drain," leaving too much of the day-to-day work on the shoulders of one person, and that there was a needless overlapping with the structure of the Museum.

In addition to the preservation and volunteer efforts of RSGHS, other accomplishments were also noteworthy:

- Establishment of the annual historical photo contest
- Establishment of the annual GERTIE award
- Regular lectures and historical programs
- Publication of two volumes of "Settlers of Southern California"

Other successful activities included the Harvest Festival, the "Show and Tell" days, historical bus tours, and the popular picnic-visits to nearby historic sites.

As required by its Articles of Incorporation, the RSGHS assets will revert to HRM, including financial assets of about \$8500, photographic holdings, and artifacts. Items in the last two categories have long since been integrated into the museum's operations.

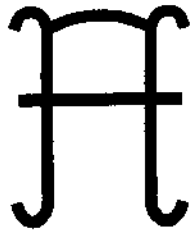
HRM to Continue Work of Society

Virtually all RSGHS activities will be continued by the Hathaway Ranch Museum, including the photo contest, the GERTIE award, and the historical programs. The newsletter, which has been published jointly, will continue under a new masthead.

Memberships will be honored by the Hathaway Ranch Museum Foundation's Board, under a new category of support group entitled the "MUSEUM GUILD." Guild members will continue to receive the newsletter and notification of programs. The "RANCH HANDS" will remain intact as the working arm of the museum, reporting to the museum's Deputy Director. In addition to leading tours, Ranch Hands will continue to help with research, writing, library, archives, boutique, restoration, and educational activities.



Jack Johnson, Caroline Long and Henry Lynn chalked up the most volunteer hours and were presented with digital clocks at the RSGHS awards picnic.



Manuel Nieto was granted this brand, shown at left, for his Rancho Santa Gertrudes in the year of 1784 — California's third Rancho. A portion was granted in 1834 to Josefa Cota de Nieto, and is now the site of Los Nietos, Downey, and the majority of Santa Fe Springs.

**HATHAWAY RANCH MUSEUM
MUSEUM GUILD**

Basic Membership Categories

Youth (high school or younger) \$1.50
 Individual \$3.00
 Family (2 adults & minor children) \$5.00
 Business: \$10.00

"Angel" Membership Categories

Supporting: \$50.00
 Sustaining: \$100.00
 Lifetime: \$500.00

Make checks payable to Hathaway Ranch Museum, 11901 E. Florence Ave., Santa Fe Springs, CA 90670

Notice of membership dues are sent on a twelve-month basis. Donations are tax-deductible in the amount allowed by law.

The MUSEUM GUILD supports the aims and activities of the HATHAWAY RANCH MUSEUM, a 501(c)3 non-profit corporation dedicated to preserving and presenting the eras of farming, ranching, and oil development in early Santa Fe Springs.

**Combined Hathaway Ranch Museum and
Rancho Santa Gertrudes Historical Society Newsletter**

Published by The Hathaway Ranch Museum and
Rancho Santa Gertrudes Historical Society

Mailing Address 11901 E. Florence Ave.
Santa Fe Springs, CA 90670

Telephone (310) 944-6563 or (310) 944-7372

RSGHS Board of Directors

President Jean E. Hathaway
Vice President Faye Smetanka
Corres. Secretary Nadine Hathaway
Recording Secretary Joyce Virnala
Treasurer Felee Cutrone
Membership Ray Stenson
Liaison-Museum Jean Hathaway
Liaison-Pico Rivera Martha Russell
President of the Docents Caroline Long

Board Members Evelyn Grembla
 Ruth Grams
 James Hogan
 Jack Johnson
 Henry Lynn
 Betty Putnam
 Francine Rippy
 Gloria Saldano

Typesetting & Composition Terry Hathaway

This Newsletter is a general news journal and solicits articles regarding the general interest, and the technical aspects of historical maintenance or restoration. Submissions must be sent to the Hathaway Ranch Museum or RSGHS, 11901 E. Florence Ave., Santa Fe Springs, California 90670.

Calendar Section

February 2, 1992 Sunday 2:00 - 4:00 pm
 Tours—Hathaway Ranch Museum Free

February 23, 1992 Sunday 2:00 pm
 Special Program:
 "Presidents & First Ladies in Whittier...
 and other foreign places"
 Members Only - Reservations Required

March 1, 1992 Sunday 2:00 - 4:00 pm
 Tours—Hathaway Ranch Museum Free

April 5, 1992 Sunday 2:00 - 4:00 pm
 Tours—Hathaway Ranch Museum Free

May 3, 1992 Sunday 2:00 - 4:00 pm
 Tours—Hathaway Ranch Museum Free

June 7, 1992 Sunday 2:00 - 4:00 pm
 Tours—Hathaway Ranch Museum Free

July 5, 1992 Sunday 2:00 - 4:00 pm
 Tours—Hathaway Ranch Museum Free

August 2, 1992 Sunday 2:00 - 4:00 pm
 Tours—Hathaway Ranch Museum Free

SALUTE TO RSGHS DIRECTORS

The RSGHS Board of Directors changed little since its incorporation. Those who served are to be congratulated for their participation and dedication:

- | | |
|-------------------|--------------------|
| Amat Barcelon | Jack Johnson |
| Ann Bartunek | Caroline Long |
| Trent Bessent | Henry Lynn |
| Felee Cutrone | Alex Morales |
| Joe Da Rold * | Betty Putnam |
| Tina Delgado | Esther Reddick |
| Ruben Elizalde | Francine Rippy |
| Edna Goodwin | Martha Russell |
| Jane Gothold * | Gloria Saldano |
| Ruth Grams | Faye Smetanka |
| Evelyn Grembla | Ray Stenson |
| Bernard Hardy | Mary Ellen Thursby |
| Jean Hathaway | Joyce Virnala |
| Nadine Hathaway * | Ione Whistler |
| James Hogan | |

* indicates Co-Founders

MUSEUM REORGANIZATION

At its meeting on November 30, 1991 the Museum Foundation Board also made some noteworthy changes. Nadine Hathaway is now the Executive Director of the museum, and Joe Da Rold is the Deputy Director.

Visitors to the museum will find a host of other changes:

- **Visitor's Center** - The former Diorama Room will now play host to all visitors for a short welcome and orientation before the start of their tours. Interior walls will feature a Volunteer Recognition Display and other awards, plus visual materials depicting early Santa Fe Springs and the Koontz/Hathaway families. The sign-in book and beverages will also be based here. New lighting is being installed. This new area was opened at the January 5th Open House.
- **California History Plaza** - This outdoor area in back of the Fig Barn is the new home of the dioramas. A large orange tree is now surrounded by benches and will serve as a demonstration area and an attractive rest area and assembly area. The hay wagon and the John Deere Combine (formerly hidden) are housed here as well.
- **Program Barn** - This equipment storage barn is being converted into a programming facility which will seat 70 people. In addition to showcasing lectures and entertainments, this barn will be used for slide programs, training & workshops, and for welcoming groups too large for the Visitor Center. It will be ready in February or March, subject to moving a wall and pouring a slab for the floor.
- **Museum** - With programming functions moved out of this building, objects inside the house are being reorganized. The rooms will no longer emphasize era, but will focus on function. Each room will still contain about 95% of the items it held formerly. The biggest change is that the Little Lake Room has been converted into the "Country Store," thereby removing the card tables and sales from the Living Room. The Living Room has also received the "family touch" - two mannequins are now on exhibit there, family photos on the piano, and a family tapestry hung on the wall. The next time you visit, stop in and play a game of Chinese checkers in front of the fireplace! Docent information folders are located in each room, and Ranch Hands will soon receive complete packets.
- **Workshops** - The garages at the end of the drive will be rewired to allow for working on projects that formerly could not be accommodated. A Welding Shop, a Wood Shop, and two other spaces will fea-

ture works in progress. Once projects are completed, the items will be moved into exhibit areas.

- **Ranch Hands** - Under the reorganization by the Foundation Board, Ranch Hands who have given a minimum of 25 volunteer hours to HRM the previous year will receive a complimentary membership in the Museum Guild. The Museum will continue to sponsor the annual Awards Picnic.

UPDATE ON PROGRAMS

The MUSIC OF WWII program, presented by Bernard Hardy and Rita Murray, was warmly received by an audience of 35 people. The highlight for most was the sing-a-long of songs of the armed services. Nary a dry eye was to be found by the end of the program.

The Christmas Boutique on December 1st was a success in all areas. Carrie Long did a wonderful job pulling together crafts and baked goods for the new "Country Store." There was so much that most of the tables and dressers in the Living Room overflowed with goodies. Bernard played the beautiful grand piano, and Christmas songs could be heard throughout the house. Outside, Nadine had prepared beverages, and Larry Nelson led his team of horses around the property, pulling the hay wagon. ("O'er the fields we go, laughing all the way...") About 100 visitors came to enjoy the afternoon. Many thanks to the Ranch Hands on duty and to everyone who contributed to the Boutique. The Boutique raised \$450 this year with thanks to the following contributors:

Mildred Carlzen	Art & Rosie Martinez
Feelee Cutrone	Frank & Helen Martinez
Joe Da Rold	Virginia Mathony
Evelyn Grembla	Betty Putnam
Jean & Meredith Hathaway	Francine Rippy
Nadine Hathaway	Faye Smetanka
Loline Hathaway	Ray & Phyllis Stenson
The Jack Johnsons	Mollie Teschler
Caroline Long	Joyce Vimala
The Henry Lynns	

Don't forget to make your reservations for the President's Day Program on February 23. The musical program will begin at 2:00 p.m. Consult your last issue of the newsletter for other details.

HARDWORKING VOLUNTEERS

In the process of gathering statistics on volunteers for HRM Recognition programs, we have come up with a

preliminary total of volunteer hours worked in the last three years. What's your guess? (A) 2000 hours, (B) 5000 hours, (C) 7000 hours. The answer is "C," and most of those hours were put in by volunteers who are still going strong. Herewith is the list of 1991 Active Volunteers: (Applause! Applause!)

Agapoff, Frances
Boles, Virginia
Carlzen, Marvin
Fargo, Marge
Grembla, Evelyn
Hathaway, Jean
Johnson, Jack
Long, Caroline
Martinez, Frank
Parent, Jonathan
Ramirez, Josie
Smetanka, Faye
Stenson, Phyllis
Teschler, Mollie
Thorson, Louise

Bartunek, Ann
Carlzen, Mildred
Cutrone, Felee
Grams, Ruth
Hathaway, Jesse Louis
Hathaway, Meredith
Kiesel, Anita
Lynn, Henry
O'Connor, Mary
Putnam, Betty
Rondeau, Marjorie
Smith, Mel
Stenson, Raymond
Thorpe, Jack
Virnala, Joyce

GENEROUS MEMBERS

Napoleon and Ritsuko Duncan
Soroptimists International of Santa Fe Springs
Amat and Mary Ann Barcelon
Rodger Applegate
George and Mary Hewitt
Willa Enloe

MEMBERS IN THE NEWS

Betty Putnam was recently elected to the Little Lake City School Board. She continues to serve on the Board of Directors of the Hathaway Ranch Museum foundation.

The Soroptimists International of Santa Fe Springs was this year's winner of the fund-raising spelling bee held by the City Library. The letter-perfect team included Shirley Larson, Kay Edwards, and Judy Nelson.

RAGTIME!

Ranch Hands are asking for donations of clean rags for their use when working on the engines, equipment and just generally cleaning things up for Open House. If you have any rags to spare, please drop them off at the museum machine Shop. And Thank You to everyone who responded to the request for cotton!

Environmental and Safety Concerns

Several months ago, in order to comply with California Law SB198, the museum adopted a safety plan for its employees. A meeting with the outdoor Ranch Hands ensued to discuss safety for volunteers, and a question was raised about the safety of the Chem Lab inside the Machine Shop. After meeting with safety officials within the SFS Fire Department, our Deputy Director interviewed three companies to handle the disposal of potentially hazardous chemicals. The inventory and packaging have been completed, and the Firemen's Association has offered to advise on the disposal of waste products. Fortunately the Lab had natural ventilation and was kept locked, so there was very little danger, but we are glad when someone alerts us to any hazards that may have been overlooked. The Lab will eventually be available for tour access.

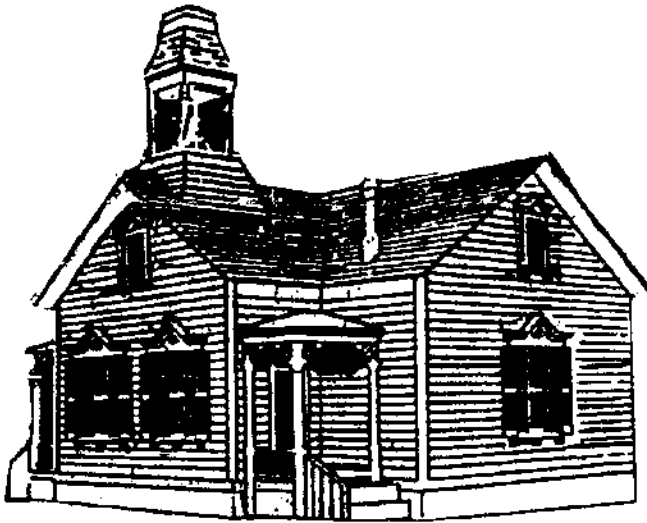
Not everything inside the Lab was dangerous. In fact many chemicals are only considered "hazardous" when they are disposed of, not while they are in current use. Some of the items in Dick Hathaway's Lab included spices and medicinal herbs for homemade tonics, and a couple of litres of rainwater from 1956. Who says we don't save everything at the Hathaway Ranch Museum?



For those who may wonder why HRM continues to call itself a ranch, we are happy to tell you of our largest recycling program: Once or twice a month, Eleanor Brown (Montebello Historical Society) sends over a truck load of horse manure from her own ranch. Fortunately, it is dry by the time it's dropped off here. Gil claims it is the secret formula for healthy plants. If any of our members need some for their gardens, we'll be glad to let you know when the next truckload arrives! Once a ranch, always a ranch!

DEDICATIONS

Two public dedications were held recently of local historical interest. The Santa Fe Springs City Council and Historical Committee unveiled an historical marker commemorating the original site of the Little Lake School. Congratulations to Janice Smith, Chairman of the Historical Committee, for the work of her committee. Several other sites have been listed for future markers, as soon as the funding is in place.



Line Drawing of the original Little Lake School building

A new sculpture, entitled "Orange Harvest," was dedicated on November 8, 1991 on the grounds of Hathaway Industrial Properties at 10631 Hathaway Drive. The cast-stone sculpture, created by artist Richard Ellis, depicts three turn-of-the-century workers picking oranges from a life-size tree. Louise Thorson, chairman of the SPS Heritage Artwork in Public Places Committee, Developer Tom Ruh, and Nadine Hathaway, dedicated the artwork with appropriate celebratory messages. Nadine's remarks follow:

I came to live on this property 56 years ago today. Dick and I were married on November 7, 1935 in Yuma, Arizona and had a one night honeymoon at the U S Grant Hotel in San Diego, then returned here the next day.

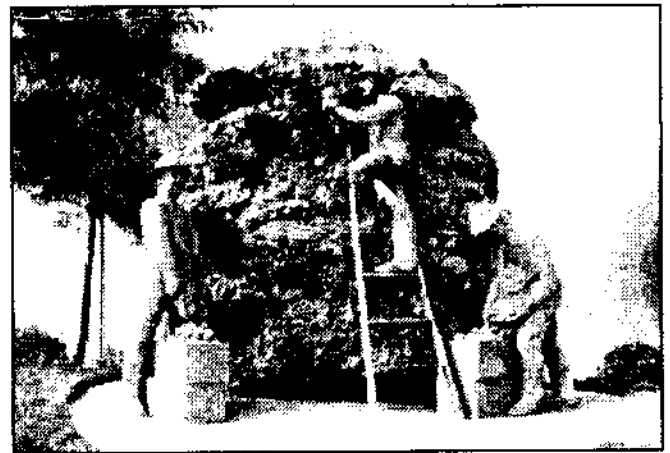
I learned to drive a car by driving a dump truck between the orange groves on this very site. I drove a team of horses while the workers walked beside me and threw dried ears of corn into the wagon.

As the years rolled by and the land became more valuable, my husband resisted industrial development. Some developers antagonized him by suggesting that he sell the homesite, live on the interest, and move away from here.

But something had to be done. Taxes were rising steeply. I confided the problem to Dick Fields, who was with the Real Estate Department of Southern Pacific Railroad. He sent Vincent Ruh to see my husband.

Dick liked Mr. Ruh who was tactful and didn't push. They worked on plans for the warehouse to the west of us, which we had in partnership with our children. But that was all that Dick wanted. "No more development," he said. "I want to see the mountains." We used to be able to stand in our back yard and see the snow on Mt. Baldy.

After Dick passed on in 1986, I reached Mr. Ruh and suggested that we work on this site. I needed the money to help fund the foundation which is the Hathaway Ranch Museum. And from where Dick is now, I think he can "see the mountains."



"Orange Harvest" dedicated on November 8, 1991

T"HONK" S A LOT!

Cricket and Gertie, the Hathaway geese, send their thanks to Ray Stenson and Marvin Carlzen for their generosity, thoughtfulness, and weekly supply of lettuce.



Joe Da Rold, Deputy Director of the Hathaway Ranch Museum, presents a plaque to Virginia Mathony, 1991 winner of the Gertie Award.

RESEARCH PROJECTS

Gloria Duran has been doing research on the history of Los Nietos, with the hope of making the manuscript available to schools and libraries. Once the history is completed, she would like to see a program of historical markers come about in Old Los Nietos, to remind people of the importance of the early settlement. Anyone with information please contact Gloria through Joe Da Rold at the museum office: 310/944-7372.

Joe was able to provide the following recently discovered information on the history of the Los Nietos Post Office:

- Established: June 4, 1867 - First Postmaster: Evy Knox
- Discontinued: July 3, 1876
- Re-established; May 29, 1891
- Discontinued: November 15, 1904
- Re-established: December 17, 1924 as a "Second-Class" Post Office
- Established: February 1, 1954 as a branch of the Whittier Post Office

Pico Rivera, Downey, and Santa Fe Springs all can trace their history back to the Los Nietos Township, but much history has been lost because it never became an incorporated community. There is a rich heritage waiting to be discovered out there.

Joe is researching two early businesses in Fulton Wells/Santa Fe Springs: the Baker Winery and Doc O'Connell's Horse Stables. The only material in the HRM files on the former comes from an interview Dick Hathaway had with Leona Myer. HRM has a number of photos of the O'Connell Stables but very little information. Please call Joe at the museum office if you have any information.



FROM THE ARCHIVES: A recent housecleaning turned up an issue of the "Prune News," a publication of the California prune Advisory Board. Although it does not mention who "sits" on the board, we suspect that one of the California Dancing Raisins is liaison member. This particular issue had timely ideas "to take the sizzle from Summer heat waves." For children, they suggest stuffing each pitted prune with a spoonful of peanut butter. For more sophisticated tastes they provide a recipe for "Spiced Prunes":

1 cup orange juice
3/4 cup brown sugar
2 three-inch cinnabom sticks
1/3 cup vinegar

Simmer for 5 minutes and allow to stand in spicy syrup for several hours before serving. Use to accompany cold meats and potato salad. They sound like good ideas for a stay-at-home weekend!



Jack Johnson and Henry Lynn took the 1941 International Flatbed Truck to the Santa Fe Springs Birthday Parade to represent the Hathaway Ranch Museum

Photograph at Left: Members of the Santa Fe Springs Firemen's Association sell T-Shirts to help restore their 1903 steam pump fire engine, which resides at the Hathaway Ranch Museum