

The Hathaway Ranch Museum



NEWSLETTER

Winter 1995
Volume 5, Number 1



SETTLERS OF SOUTHERN CALIFORNIA

Personal Memories

Volume VIII is off the press and for sale at the Hathaway Ranch Museum. This project has been a great way to preserve the history of the Rancho Santa Gertrudes area, and to make history available to interested history buffs and students of history. Stories in Vol. VIII tell the memories of seven families.

Two stories are about the early days in Norwalk. IRENE NUFFER tells about her various experiences including her stint as a volunteer with the Norwalk Historical Heritage Committee; the Reverend WESLEY BAKER recalls the sprawling area that seemed to have no direction, but finally became a thriving city.

YVONNE SULLIVAN wrote about the animals she and her family enjoyed, and about her father (MILTON CLEMENTS) and his early days in the area.

TETA OGLESBY SMART, the pretty, blonde-haired "tom boy" of the area, shares one of her school-day pranks, and ROBERT L. SANCHEZ-COLIMA relates the history of his family.

ROBERT MARCHBANK made available part of his mother's diary—the late ANNIE MARCHBANK—who withstood the rigors of wagon travel in 1896 from the state of Nevada to Artesia, California, and of her life in Artesia after the family settled there.

The stories are delightful. You'll love them all.

The Whittier Museum

A major new exhibit at the Whittier Museum, 6755 Newlin Avenue, Whittier, began on January 12, 1995. The exhibit is called "Starstruck: One Hundred Years of Whittier Theater History." The exhibit can be viewed on Saturdays and Sundays from 1-4 p.m. Call (310) 945-3871 for more information.

NONAGENARIANS, SPEAK UP!

Golden bell ringers, ring forth!

We have made it a policy not to mention our members' birthdays and anniversaries, partly for fear of leaving someone out, **BUT 90 YEARS?**

We want to hear from the nonagenarians among our members. Is Louise Thorson the only one? Also, we want to know how many of our members have celebrated a 50th wedding anniversary. Send us a card or give us a call.



Louise Thorson at 90 years.

SPECIAL EVENT

RUTH GRAMS, noted harpist of the Whittier area will be playing Irish tunes on her Irish Harp at the Museum Open House on Sunday, March 5, 2-4 p.m.

HATHAWAY RANCH MUSEUM GUILD

Youth (high school or younger)	\$1.50
Individual	\$3.00
Family (two adults & minor children)	\$5.00
Business	\$10.00

"Angel" Membership Categories

Supporting	\$50.00
Sustaining	\$100.00
Lifetime	\$500.00

Make checks payable to Hathaway Ranch Museum, 11901 E. Florence Ave., Santa Fe Springs, CA 90670

Notice of membership dues are sent on a twelve-month basis. Donations are tax-deductible in the amount allowed by law.

The MUSEUM GUILD supports the aims and activities of the HATHAWAY RANCH MUSEUM, a 501(c)3 non-profit corporation dedicated to preserving and presenting the eras of farming, ranching, and oil development in early Santa Fe Springs.

Hathaway Ranch Museum Newsletter

Published by	The Hathaway Ranch Museum
Mailing Address	11901 E. Florence Ave. Santa Fe Springs, CA 90670
Telephone	(310) 944-6563 or (310) 944-7372

This Newsletter is a general news journal and solicits articles regarding the general interest, and the technical aspects of historical maintenance or restoration. Submissions must be sent to the Hathaway Ranch Museum, 11901 E. Florence Ave., Santa Fe Springs, California 90670.

Lifetime Members

O.K. Flood	Thomas Scott
Nadine Hathaway	Ray & Phyllis Stenson

MUSEUM SCHEDULE

Monday, Tuesday, Thursday & Friday
(except for holidays) 11:00 A.M. to 4:00 P.M.

First Sunday Of Each Month
(except for holidays) 2:00 to 4:00 P.M.

SPECIAL EVENTS

Sunday, March 5, 1995 2:00 to 4:00 P.M.
Irish Harp Music by Ruth Grams

DONORS

Central Glendale Chapter, AARP
Brownie Troop #42, Whittier

VOLUNTEERS

The following people gave time to the museum during the fourth quarter of 1994.

Frances Agopoff	Frank Martinez
Marvin Carlzen	Rosie Martinez
Mildred Carlzen	Frank Moody
Milton Clements	Betty Putnam
Fvelyn Grembla	Josie Ramirez
Aaron Hathaway	Francine Rippy
Elizabeth Hathaway	Marjorie Rondeau
Jean Hathaway	Faye Smetanka
Jesse L. Hathaway	Phyllis Stenson
Jesse R. Hathaway	Ray Stenson
Meredith Hathaway	Mollie Teschler
Remy Hathaway	Louise Thorson
Richard F. Hathaway, Jr.	Joyce Virnala
William Hathaway	
Jack Johnson	
Carrie Long	
Henry Lynn	

GENEROUS MEMBERS

(Since last listing in the Autumn, 1994, newsletter)

Amat & Mary Ann Barcelon
Willa Enloe
Marjorie Fargo
Arthur & Rosie Martinez
George & Paula Minnehan
Arthur & Gloria Saldano
E. M. Schroeder
Al & May Sharp
Teta Smart
Louise Thorson
Richard H. Weaver

NEW MEMBERS

Gloria Dominguez
Olive Lawn Memorial Park, Inc.
Edward Trader
John Vincent

CHANGES OF ADDRESS

Glen & Ann Bartunek 655 Colby Cir. Apt. 14 Claremont, CA 91711	Jackie Shay 390 Diamond St. Laguna Beach, CA 92651
--	--

Joe Da Rold
531 W. Eighth St.
Plainfield, N.J. 07060

MEMBERS IN THE NEWS

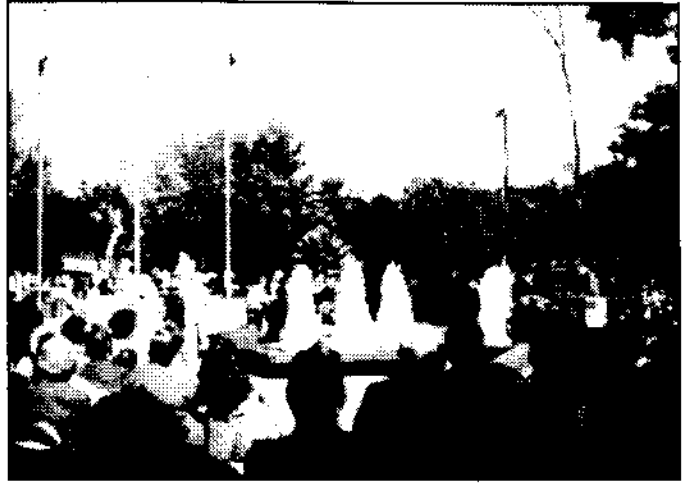
BETTY PUTNAM, a director on the Hathaway Ranch Museum Board of Directors, was recently elected president of the Little Lake City School District Board of directors.

As president she wants to improve the reading ability of the students and she believes it is time for the board members to take a serious stand for or against unification of the schools from kindergarten through high school. Also in favor of arts in the schools, Putnam said, "Inside every child there is an artist or musician. When you implement the arts back into the curriculum, test scores go up." She believes art instruction does not have to cost money. A Santa Fe Springs resident, Betty Putnam is active on the Sister City, Historical and Community Program Committees, and is a member of Friends of the Library. Putnam taught at Paddison Elementary School in the district for 20 years before retiring in June 1991.



Betty Putnam, President of the Little Lake City School District Board of Directors.

A MEMORIAL FOUNTAIN IN TOWN CENTER PLAZA WAS DEDICATED on November 11, Veterans day, 1994, in recognition of the sacrifices made by all war veterans. Five remodeled bronze emblems and fountain jets sparkled in the sun honoring each branch of the military: Army, Air Force, Coast Guard, Navy and Marine Corps. Veterans from Santa Fe Springs and nearby cities participated in the ceremony. Commemorative gifts, including watches, were presented to seven honor guards of the Santa Fe Springs Veterans of Foreign War Post 4138.



Dedication of Veteran Memorial Fountain at the Town Center Plaza in Santa Fe Springs.

Mayor AL SHARP who initiated the project, said he wanted the fountain to be simple, but elegant, to honor the veterans. "They have contributed so much to the community, not only as veterans, but also as senior citizens," Sharp said.

PETE ROMERO who fought in the Korean War was happy that some recognition was finally given to the men who came back from Korea.

LUIS J. FRANCO, ELNA SUE JOHANSON, JOHN McMILLEN and JOE R. RAMIREZ have all contributed recently to "Letters to the Editor" in the Whittier Daily News.

GOLD DISCOVERED IN CALIFORNIA

"Gold Discovered in California" is the title of **REGINA PHELAN'S** latest book. It's for the young reader and will be the first in a series of seven books written by the author in narrative form. The book is about an Englishman, Henry Charles Lee, who came to California during the height of the gold rush to open a circus. He came, not to dig for gold, but to perform before the miners nightly under canvas in the gold fields. The circus performed in San Francisco and moved on to Stockton and Sacramento. The troupe stopped long enough for a performance or two. During the performance gold nuggets were thrown at their feet, in appreciation of their skills. After the show, Henry walked around the arena and picked up the gold nuggets which were put away for safe keeping. Reservations for the series are now being accepted, and the first book is ready for immediate shipment.

The price is \$21.95 and includes shipping and handling. Contact Regina Phelan at 1002 West Road, La Habra Heights, CA 90631

SAVE OUR DEPOT

(SOD) WAS ORGANIZED BY ELNA SUE JOHANSON and a group of preservationists in 1987, the purpose of which was to preserve the Southern Pacific Railroad depot which was the Gateway to Whittier in 1888. It's the first community building in Whittier and needs to be preserved, and it's one of four remaining Victorian depots left in the state, according to Johanson. In 1978 the depot was listed on the National Register of Historic Places, and in 1988 the city bought it and moved it to the site of the old Union Pacific railroad grounds. While awaiting funds to restore it, it caught fire in early November.

JOHN ARCADI, Whittier physician and a member of SOD, urged interested and caring persons to call Whittier Council members and city manager to let them know that you care and want the depot preserved for everyone to enjoy. As of now, a lack of funds stands in the way of preserving the building. Donations may be mailed to Save Our Depot, P. O. Box 4332, Whittier, CA 90607. Interested persons may call Elna Sue Johanson for more details at (310) 693-2512.

HISTORIC GEORGE KEY RANCH

George Benn Key came to the Placentia area in 1893 from Ontario, Canada where he was born in 1854. He purchased 20 acres on the northwest corner of Placentia Ave. and Bastanchury Rd., and planted 12 acres of Valencia oranges. He was active in the community and helped organize the Placentia Orange Growers Exchange, was involved in the establishment of the Fullerton Chamber of Commerce in 1895, the Orange County YMCA in 1908, and served on the Placentia School Board in 1896. He built his present home in 1898.

In 1980, the County of Orange purchased Key Ranch to ensure the preservation of an important part of Orange County's agricultural past. Visitors can visit and view the home, two acres of a producing grove, and extensive collections of farm tools and equipment. George G. Key, (George B. Key's son) began saving items for their many collections from neighboring ranches in the 1960's.

The **KITCHEN COLLECTION** consists of three separate buildings moved to the present location in 1912. The Garage consists of girls and boys bathrooms from the old Placentia Grammar School; the back section is a blacksmith shop from the Wilshire Ranch and contains artifacts that represent domestic life in an early "grove" house and a collection of wood figures carved by Mr. C. H. Hunt.

Located at 625 W. Bastanchury Road, Placentia, CA 92670, entrance is by appointment and guided tour tours only. Make arrangements three weeks in advance by calling (714) 528-4260. Tours are limited to 30 people.

Right: Frank Moody with his 1913 Binder



Bob Marchbank with Jack Johnson's John Deere tractor. Bob said he used to have one when he farmed in Artesia.

Mel Smith shows off his wooden cement mixer.

INCIDENTALS

When HENRY LYNN was on duty at the museum recently, he talked to a visitor who partially identified a mystery photograph which has been hanging in the south tank, more specifically in the area of the simulated 1930's gas station. The picture is of a MASERATI racing car and was taken in the mechanics' area at the Indianapolis race track in 1934. The center man, among several standing near the car, is (was) the owner. Thank you, whoever gave us this information.

CONTRIBUTION TO THE BOUTIQUE: We are grateful to the following people for their contributions to our Christmas Boutique and to JESSE L. HATHAWAY for his musical accompaniment in the residence. Things can become a bit hectic on such an occasion, so if we missed your name, please let us know, and we will give you credit in our next newsletter.

Frances Agopoff
Evelyn Grembla
Ruth Grams
John Haffey
Nadine Hathaway
Jack and Kay Johnson
Carrie Long
Laura Lynn
Josie Ramirez

Francine Rippy
Marjorie Rondeau
Faye Smetanka
Mel & Veda Smith
Joyce Virnala
Ruth Winn
Elnora Young

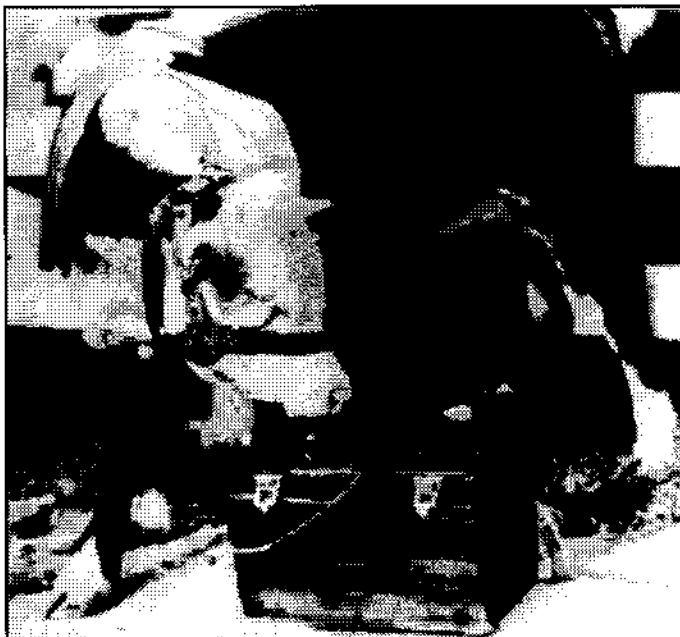
REMEMBER ROY HILL?

Roy Hill, the genial former manager of the Bank of America branch at Orr & Day Rd. and Telegraph in the early days of the incorporation of the City of Santa Fe Springs, showed up with his wife Ruth last fall at the Clarke Estate. The occasion was the dedication of a plaque honoring the late Jim Siemon. Siemon was commemorated for his generosity in forgiving 1.8 million dollars on the mortgage still owed to his estate by the City of Santa Fe Springs, which was purchasing the estate when Siemon died.

At the ceremony the Hills learned about the existence of the Hathaway Ranch Museum, and a few days later they visited the museum. One of the highlights of the tour for Roy was seeing the seventh short-wave radio set made by the late Dr. Lee de Forest, called the father of the radio tube. As it turns out, Roy Hill is a ham operator, and he had just been reading about Dr. de Forest. Consequently, he was glad to see a picture of de Forest and to learn what the short wave radio set (or diathermy) was doing here.

AND WHAT WAS IT DOING HERE?

The new shorter Oxford English Dictionary describes diathermy as "(Med.) The generation of heat inside the body by passing high-frequency, electric currents through it, using external electrodes." The Hathaways were looking for a treatment for cattle who had contracted diphtheria. Once an animal started to wheeze, it was almost always curtains for him. It was decided to experiment on one calf which had been diagnosed as having diphtheria by treating him with a diathermy machine: placing pads on either side of his chest area and manipulating dials to raise the temperature of those pads to induce a fever.



"Teddy" the Hereford calf who was cured of diphtheria by the seventh diathermy (short wave) set Dr. Lee DeForest made.

"Teddy," as the calf was called, was treated daily for awhile and began to show improvement. When he was pronounced cured and fattened for market, his picture was taken with Dr. de Forest, Dr. C. E. Wicktor, Los Angeles County veterinarian (who had followed the course of treatment with interest); and Dick Hathaway. Although treatments by diathermy had proved to be effective, they were labor intensive and therefore expensive. When World War II came along and sulfa was invented or discovered, a more efficient method of treating cattle was found. The sulfa powder was placed in a large gelatin capsule and by means of a balling gun (on display in our milk barn), forced down the animal's throat. The poor critter had no choice but to swallow it. And it worked.



"Teddy" the Hereford calf, with (left to right) Dr. de Forest, Dr. C. E. Wicktor, Los Angeles County veterinarian, Dick Hathaway and an unknown person.

AN INTERESTING AFTERMATH

The senior Jesse E. Hathaway, upon reflecting on the fortuitous effect that the diathermy set had on cattle, decided to see if it would help him. Hathaway had always had weak lungs. When he was just a teen-ager (and on his own) a doctor warned him that he would probably not live past his early twenties. He was diagnosed with tuberculosis. Lola McCarric, who later became Mrs. Jesse Hathaway, expressed concern for her fiancée's health as shown in early letters. And it was Jesse's poor health which drove the couple from their home in Los Angeles to buy acreage in what is now Santa Fe Springs. A doctor had told him that he needed to be in the fresh air. They came here to farm and farm they did.

Jesse gave the diathermy credit for helping to pull him through bouts with bronchitis and pneumonia. He was frequently observed lying on the couch in the back entry porch of his big house, a wrapped pad on top of his chest and another under his chest, both connected by wire tubes. *Continued on next page...*

Roy Hill, Continued from previous page

to the set. He could manipulate the dials on the set to make the pads comfortably warm. The once sickly youth, through discipline and determination, and perhaps a modicum of good luck, lived to be 88. In the meantime, impressed as he was by what he believed diathermy had done for him, Jesse had given each of his three sons a diathermy set so that they and their families could have the benefit of this kind of treatment.

Three generations of Hathaways after Jesse have been helped by the use of diathermy. A few members of the family will swear to its life-saving propensity.

EPILOGUE

We have come a way from the original reference to Roy Hill. One thought leads to another. Today some registered nurses are not aware that diathermy was ever used as a treatment. Antibiotics are supposed to be the ultimate cure. Well, time moves on.

The contact with Roy Hill, however, demonstrates what kinds of encounters we have at the museum on our slow days when we are open with just a skeleton crew. We encourage people to come to our open house on first Sundays from 2-4 p.m., but there are rewarding discussions sometimes on Mondays, Tuesdays, Thursdays and Fridays (we are closed on Wednesdays, Saturdays and most Sundays) from 11 a.m. to 4 P.M. discussions that sometimes have interesting repercussions.

Thanks for getting me started, Roy.

Nadine Hathaway

VOLUNTEER RECOGNITION PICNIC

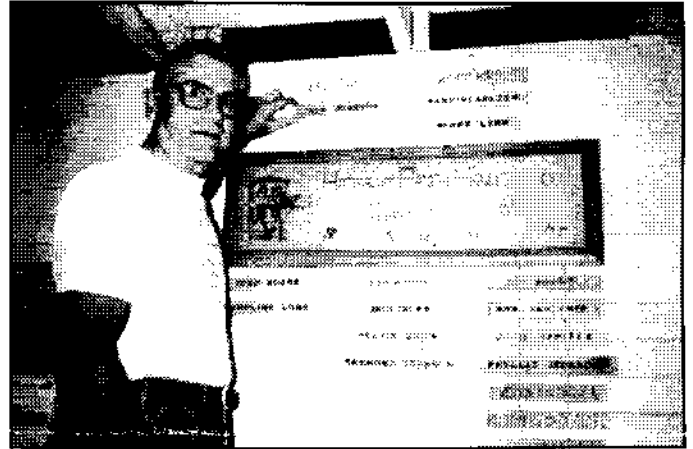
MARVIN CARLZEN received recognition as the ranch hand who racked up the most number of volunteer hours, 323, during the fiscal year of September 1, 1993, through August 31, 1994.

Runners up were JACK JOHNSON with 221; HENRY LYNN with 182; MILT CLEMENTS with 176; and MEL SMITH with 149.

CARRIE LONG had the most, 87, of the "inside" ranch hands. Appreciation was expressed by the chickens, geese, guineas, peacock, pheasant, and parrots to RAY STENSON for lettuce and other greens that he brings them regularly.

Members danced to the music of TOM DI PONZIO'S one-man band and partook of JOHN HAFFEY'S squash pie, for which he grew the squashes himself and used a pumpkin

pie recipe. John declares that cooking is his hobby and well it might be, as witnessed by the dozens and dozens of jars of homemade jams, jellies, preserves, and pickles which he has brought to the museum to be sold.



Jack Johnson moves his name plate to indicate that he has given over 1,500 hours as a volunteer at the museum.



At Left: John Haffey serves his homemade squash pie. He brought enough for all the guests.

Below: Gloria Rahn teaches Eddie Aycock and Shannon Lynn the basics of Line Dancing



Lined up for BBQ at the Volunteer Recognition picnic.